

Java Web Start for Windows



12301 Research Blvd.
Building IV, Suite 410
Austin, TX 78759

U.S. Help Desk Phone: +1-800-546-9646 (or direct +1-512-697-3000), select ext. 3400

U.K. Help Desk Free Phone: 0800 032 6063

Europe Help Desk Phone: +44 20 7190 2947

Help Desk Email: support@lim.com

+1-512-697-3001 (Fax)

Part Number: 083_69

Date: March 6, 2008

Copyright © 2003-2008 by Logical Information Machines, Inc.

Patented May, 1995 U.S. Patent No. 08/392, 612

All rights reserved.

No part of this publication may be reproduced, stored in a retrieval system, or transmitted in any form or by any means, electronic, mechanical, photocopying, recording, or otherwise, without the prior written permission of Logical Information Machines, Inc.

Restricted Rights Legend

Use, duplication, or disclosure by the Government is subject to restrictions as set forth in subdivision (c) (1) (ii) of the Rights in Technical Data and Computer Software clause at 252.227-7013.

Logical Information Machines, Inc.
120 North LaSalle Street
Suite 2150
Chicago, IL 60602

(312) 456-3000

Product names mentioned herein are for identification purposes only and may be trademarks and/or registered trademarks of their respective companies.

While every precaution has been taken in the preparation of this manual, we assume no responsibility for errors or omissions. Neither is any liability assumed for damages resulting from the use of the information contained herein. Logical Information Machines, Inc. may revise this publication from time to time without notice.

Table of Contents

Java Web Start for Windows	1
Overview	1
Apache Tomcat Web Server	1
Install Java Web Start	1
Launch MIMIC JNLP Software	2

Java Web Start for Windows

Overview

This document discusses the technologies used to install and run the MIMIC software using the Java Network Language Protocol (JNLP). Java Web Start is a tool required to be installed on the client machine that initiates a download of the MIMIC program and library files. When the user initially points his Internet browser to a URL address specifying the JNLP file, the Java Web Start program will connect to the server and request the MIMIC files. Once the files are downloaded, Web Start will prompt the user to allow access to his/her computer. Once access is granted, the MIMIC program is cached and then started up. After the initial request, Web Start will only check the server for newer files. If no new files are present on the server then Web Start uses the cached program files and libraries.

Apache Tomcat Web Server

LIM distributes MIMIC JNLP installation files co-bundled with the Excel Add-in Data Loader Server files and the Apache Tomcat web server. **You must install the Apache Tomcat web server first before setting up the Java Web Start tool. See the chapter titled “Apache Tomcat Web Server Installation” in the [MIM Data and Development Guide](#) for instructions on setting up the Apache Tomcat web server.**

After the server starts for the first time, it will see the mimic.war file and unpack it automatically. This will only occur automatically on the initial startup of the web server. After the server unpacks the mimic.war file the \$LIMHOME/de-jakarta/webapps/mimic directory will be created and all necessary files for clients will be placed in that directory.

Install Java Web Start

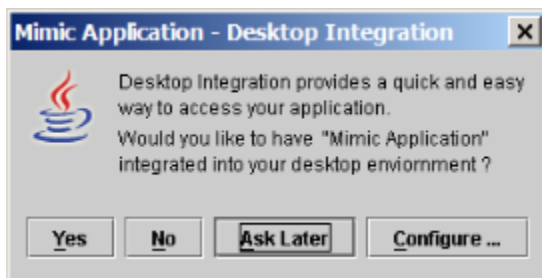
If the client does not have the Java Web Start program it can be downloaded from the “[Downloads](#)” page on the LIM Web site.

The following shows the Java Web Start installation dialog windows:



Select the **Details** button if you would like more certification information. Select the **Start** button to begin the installation.

The next dialog window is for setting up a short-cut desktop icon to launch the MIMIC JNLP software. Select **Yes** to set up a desktop icon. Select **No** or **Ask Later** if you do not want a desktop icon. The **Configure** button is for customizing the users Web Start dialog window to include other Web Start applications (not necessary for this installation).



After selecting **Yes**, **No**, or **Ask Later**, the Web Start installation process will finish loading.

Launch MIMIC JNLP Software

To launch the MIMIC JNLP software either:

- Select the newly created MIMIC application desktop icon.
- In a browser window, point the web browser to the Web server where the MIMIC files were installed. For example, if the web server where the MIMIC files were installed at was named *foo* then the user would point the browser to:

`http://foo:9090/mimic/`

The MIMIC JNLP software will launch. The MIMIC JNLP software functions the same as the MIMIC software that runs locally on a client's machine. See the [MIMIC Training Guide](#) to work through lessons on using the MIMIC software and the [MIMIC User Guide](#) for details on MIMIC functionality. See the [MIMIC Product News](#) for the latest features and enhancements and the [MIMIC Release Notes](#) for a detailed list that includes bug fixes.

