

# Commodity Query

## Key Benefits

- ▶ Model market events
- ▶ Test events throughout history
- ▶ Simulate trading strategies
- ▶ Build notification systems
- ▶ Analyze patterns using near-English query language

## Introducing Commodity Query

Commodity Query allows market participants to quickly analyze investment instruments, identify opportunities and back-test trading strategies. The application uses a patented near-English query language to provide users the ability to perform sophisticated market analysis without any prior programming knowledge. The user-friendly interface provides access to Morningstar's comprehensive database of commodity and financial data which includes energy and security prices, sentiment statistics, weather, monetary and economic indicators.

## Event-Driven Analysis

Users can create a variety of event-driven studies including price analysis corresponding to economic release dates and other relevant dates such as Federal Open Market Committee (FOMC) meetings, U.S. Treasury Auctions, international elections or U.S. Department of Agriculture (USDA) report releases. In addition to date and market events, users can define Custom Events which identify conditions and patterns in the price series.

## Technical Analysis

Robust technical analysis capabilities allow users to perform market momentum measurement analysis, build inter-market reports and customize charts and graphs with technical study overlays. A powerful tool for front and mid office, the cycle analysis enables users to mine large data sets and uncover periodic or recurring patterns.

## Fundamental Market Analysis

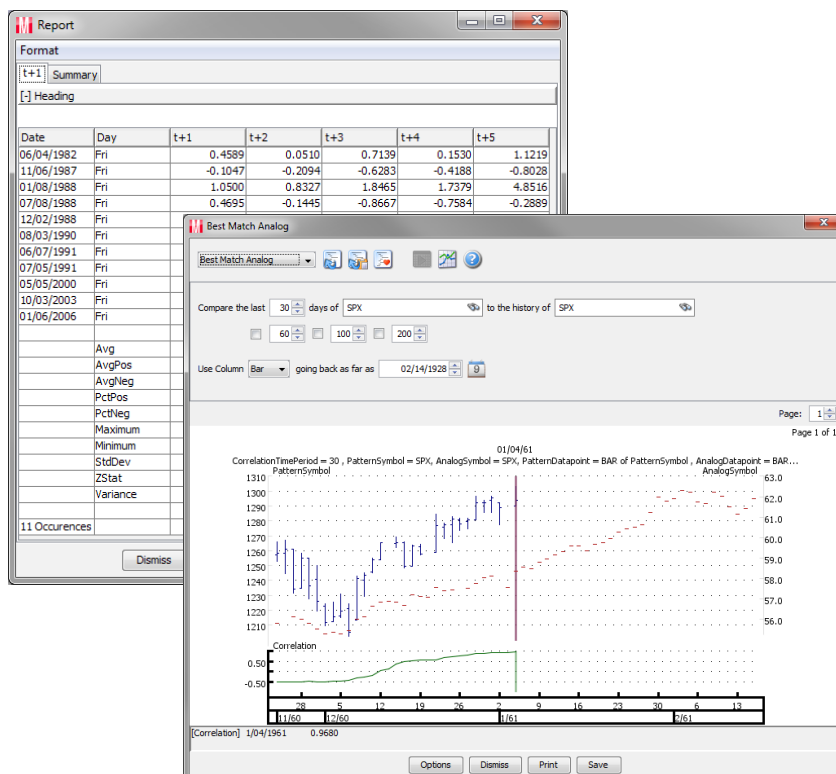
Commodity Query enables users to perform fundamental market analysis including macroeconomic trend reports and analysis of corporate fundamental data on equity price movement. The depth and breadth of historical data available through the application give users the ability to evaluate the performance of an individual security, a single commodity contract or the market as a whole.

## Trading System Simulation

By accessing Morningstar's comprehensive historical database, users can create and back-test various trading strategies. Perform trend and counter-trend studies using financial and commodity products. These strategies may then be optimized for a variety of system parameters.

## Commodity Query

Commodity Query offers a user-friendly interface to simulate and test trading rules, perform cross-market and risk management analysis, and model events and patterns based on market conditions.



## Templates

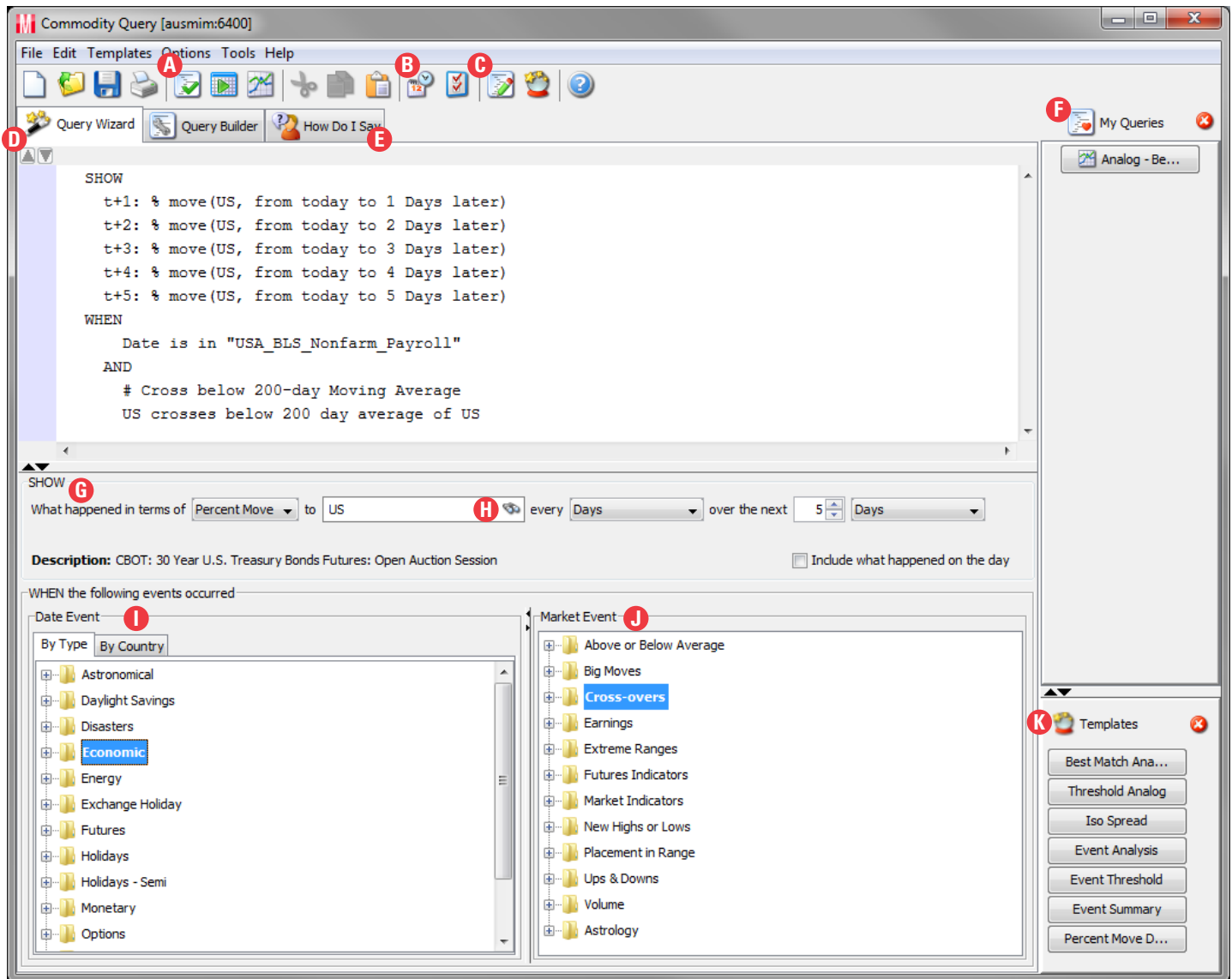
Commodity Query templates allow investment professionals to immediately access and edit complex queries. Users can select from multiple pre-built queries including Best Match Analog, Threshold Analog, Percent Move Day Count and Event Analysis. For more in-depth studies, users can modify required parameters to create custom-built models that can be retrieved from a personal query library.

## Learn More

For more information please contact Morningstar Sales Team.

- ▶ +1 800 546-9646, Option 2 (Sales)
- ▶ [www.morningstarcommodity.com/tools-apis/commodity-query](http://www.morningstarcommodity.com/tools-apis/commodity-query)

# Commodity Query



## A Check Query

Perform a check on the syntax of a query.

## B Execution Units

Determine the time-frequency of a query. The default is Daily.

## C LET Statements

Create a LET statement to assign properties to user-defined variables.

## D Query Wizard

Create a query using the prebuilt list of market and date events.

## E How Do I Say

Select a query from a list of examples showing the query syntax and description.

## F My Queries

Save and edit custom-built queries or select from a list of frequently run queries.

## G SHOW Statements

Identify the type of study, increment of time and how far past the event the study should look.

## H Browse Function

Search the database to locate symbol information.

## I Date Event

Access Morningstar's library of files containing dates for meetings, report releases and other market relevant dates.

## J Market Event

Add a pre-defined market event to a WHEN condition to seek out dates when a particular event occurred.

## K Templates

Access a list of pre-defined queries. Templates can be modified to meet user-defined parameters.