

Commodity Add-In 2.2

Key Benefits

- ▶ Easy-to-use interface
- ▶ Access to over 200 data vendors
- ▶ Native Excel Functions
- ▶ Normalized units of measure and currency
- ▶ Dynamic meta data search
- ▶ Customized navigation
- ▶ Quick access to curve surfaces
- ▶ Custom formulas
- ▶ Event driven analysis
- ▶ Proprietary data loading
- ▶ Shortcuts for custom referencing
- ▶ Seasonal analysis
- ▶ Written in Microsoft's native .NET framework

Introducing Commodity Add-In for Microsoft® Excel®

The Commodity Add-In is a high-powered tool that brings consolidated market data alongside Morningstar's rigorous quality-assurance checks into Microsoft® Excel®. The Add-In was developed by Morningstar in partnership with clients who demand fast access to large amounts of data over wide area networks.

Deployment Flexibility

Utilizing the versatile Web Services platform, the Add-In was developed to allow maximum flexibility for deployment and connectivity. Refresh time for a 1-year series is as low as 1 second.

Element Functions

The series of fourteen functions gives users the ability to extract meta-data such as descriptions, expiry dates and contract sizes for any contracts. Similar to other Excel® functions, results are returned in one cell allowing for dynamic spreadsheet creation.

Forward Curves

With the flexibility to extract forward curves for single days or multi-day ranges, the Commodity Add-In is an essential

tool for analysts and traders. The table layout is optimized for quick analysis of contract date and price. The Curve Surface output includes clearly stated delivery and transaction dates.

Units and Currency Conversion

To allow for systematic comparisons between multiple energy commodities, the Commodity Add-In converts different units of quotation into one common unit. The built-in conversion function translates measurement units and currencies into a common format for in-depth analysis.

Custom Formulas

Custom formulas allow for easy manipulation of raw time-series data into actionable information. The Commodity Add-In gives users the ability to create their own formulas or select from the large library of 100+ formulas already built into the server. Formulas range from simple addition and subtraction operations to dynamic functions such as 5x16 averages, MACD oscillators, and Bollinger bands.

Event-Driven Analysis

Proprietary near-English query language coupled with the Query Function gives research analysts and risk management professionals the ability to test technical and fundamental strategies in an Excel® environment. The scalability of the language allows for a large number of contracts, nodes, or global macro data to undergo the same trading strategy in minutes.

Seasonal Analysis

By giving users the flexibility to align raw time series and custom formulas, the seasonal analysis tool streamlines market calculations for robust year-over-year analysis.

Data Upload

Developed on the Web Services API, the data upload functionality allows users to load proprietary data to the Morningstar server in seconds. Every upload is indexed, entitled, and logged providing administrators with a comprehensive tool to see who, when, and where a data set was loaded.

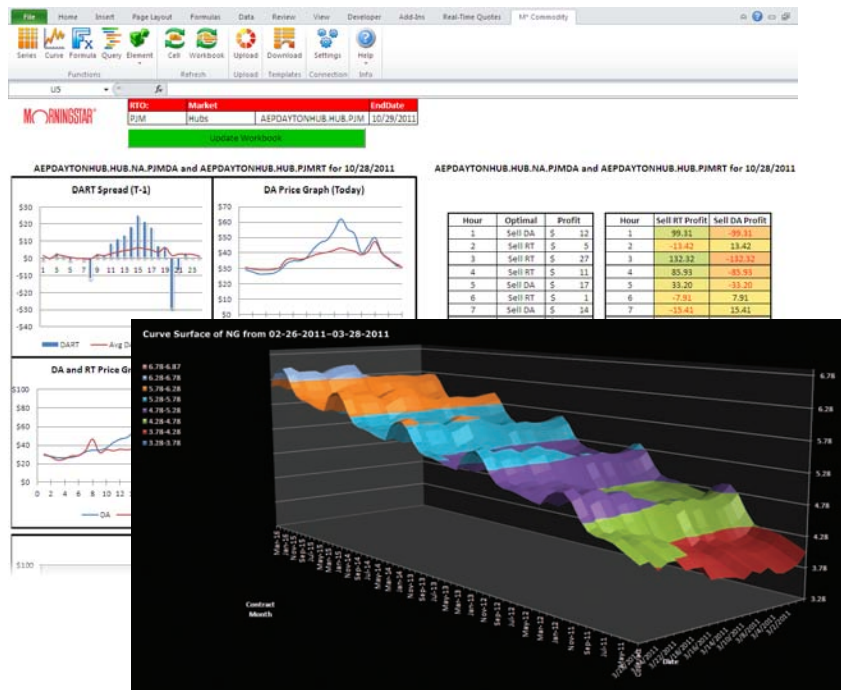
Learn More

For more information please contact Morningstar Sales Team.

- ▶ +1 800 546-9646, Option 2 (Sales)
- ▶ www.morningstarcommodity.com/AddIn

Commodity Add-In Templates

Commodity Add-In Templates are built using core and optional data sets and include charts and data tables for specific markets. Examples include: US Power Markets, Agriculture, Oil & Refined Products and Natural Gas.



Commodity Add-In 2.2

The screenshot shows the Morningstar Commodity Add-In interface. At the top, the URL is https://ws.lim.com. The interface includes a search bar (B), a 'GO' button (C), and a settings gear icon (D). Below the search bar are tabs for History, Tree View, Shortcuts, and Search (E). The main area displays a list of commodities with columns for Description and Symbol. The 'NYMEX: Light, Sweet Crude Oil Futures (USD/BBL): Pit Session' is selected. To the right, an 'Overview' panel shows details for the selected symbol: Symbol: CL, Frequency: Daily, Expiry Date: N/A, Contract Size: 1000, Currency UOM: USD BBL, and Date Range: 3/30/1983 to 10/12/2011. Below the overview is a 'Columns' list and a 'Data Preview' table. At the bottom, a 'Basket - 2 items' section shows a table with columns for Symbol, Symbol Description, and Column. The basket contains 'CL' and 'FB'. Below the basket are 'Basket Settings' (I), 'Clear' (J), and 'Send to Table' (K) buttons.

Description	Symbol
ICE: Brent Crude Futures (USD/BBL): Pit Session	FB
NYMEX: Light, Sweet Crude Oil Futures (USD/BBL): Pit Session	CL
U.S. Dollar per Euro	EURUSD
NYMEX: Henry Hub Natural Gas Futures (USD/MMBTU): Pit Session	NG
Real Time Locational Marginal Price WESTERN HUB, Hub, Pnode ID: 51288 (US Eastern)	WESTERNHUB.HUB.PJMRT
GOOG.38259P508:GOOG:NASDAQ:GOOGLE INC.:Common Shares	GOOG
IBM.459200101:IBM:NYSE:INTERNATIONAL BUSINESS MACHINES CORP.:Common Stock	IBM
FEDFUND	FEDFUND
CBOT: Corn Futures: Open Auction Session	C
CBOE: Volatility Index (VIX) Futures	CBOE.VIX
Bank of England USD per GBP daily published exchange rate	USDGBP_BOE
U.S. Dollar, 1-Week	LIBOR_1W
Nonfarm Payrolls, United States	ACE.NONFARM
California ISO LMP, Node TH_SP15_GE, DAM Market	CAISO.TH_SP15_GE.DAM
Curitiba BRA Lat: -2552 Lon: 4917 Elv: 908 (Station ID: 83840)	CURITIBA.BRA
Day-Ahead LMP for Hub CINERGY.HUB (US Eastern)	CINERGY.HUB.MISODA
CME: S&P 500 Futures: Floor Session	SP
S&P 500 Composite Index	SPX

Date	
9/15/2011	89.4
9/16/2011	87.96
9/19/2011	85.7
9/20/2011	86.89
9/21/2011	85.92
9/22/2011	80.51
9/23/2011	79.85
9/26/2011	80.24
9/27/2011	84.45
9/28/2011	81.21
9/29/2011	82.14
9/30/2011	79.2
10/3/2011	77.61
10/4/2011	75.67
10/5/2011	79.68

Symbol	Symbol Description	Column
CL	NYMEX: Light, Sweet Crude Oil Futures (USD/BBL): Pit Session	Close
FB	ICE: Brent Crude Futures (USD/BBL): Pit Session	Close

A Web Service URL

The Commodity Add-In operates on Web Services platform to allow for maximum flexibility and connectivity over a wide area network.

B Search Text Bar

Perform dynamic meta data searches to easily find the wide array of market data Morningstar provides.

C Add Symbol

In addition to searching, the text bar can also be used for direct symbol entry, decreasing time spent in the interface and increasing productivity.

D Commodity Add-In Preferences

Customize the settings in the add-in to align the application's and user's preferences.

E Tabs

To increase flexibility in finding data, the add-in leverages tabs that index the data based on different criteria. History displays the most recent selected symbols, Tree View is a hierarchical view of all data based on user entitlements, and Shortcuts allow users to create customize tabs for the symbols that matter most to them.

F Column & Data Preview

Provides a list of all the datasets and a quick snapshot of the data for a particular symbol.

G Edit/Delete Symbol

To change the granularity, default currency, or the units of measure.

H Basket Pane

Displays the user's selected symbols that will be exported to Excel.

I Basket Settings

A list of features that are optimized to enhance the output of the Add-In. They are broken into three categories: Date Options, Data Options, and Report Options.

J Clear Basket

Clears the content of the entire basket.

K Send to Table

Exports everything in the basket into Microsoft® Excel®.